

Holiday Inn Warrington



[View the Access Guide](#)

Woolston Grange Avenue, Woolston, Warrington WA1 4PX

0871 942 9087

www.ihg.com/holidayinn/hotels/gb/en/warrington/wrtuk/hoteldetail (<https://www.ihg.com/holidayinn/hotels/gb/en/warrington/wrtuk/hoteldetail>)

Guide Last Updated: 13/02/2018

[Something changed? \(/contact/something_changed?destination=/access-guide/kew-green/holiday-inn-warrington\)](#)



Google

(<https://maps.google.com/maps?ll=53.399143,-2.513831&z=14&t=m&hl=en-US&q=US&mapclient=apiV3>)

Map data ©2018 Google

Access Guide



[Explain these icons \(/our-icons\)](#)

[Expand all](#) [Collapse all](#)

Hotel Introduction

[Collapse -](#)

Hotel Information

[Collapse -](#)

- The hotel has its own parking facilities.
- This hotel has its own restaurant located on the ground floor.
- Conference/meeting facilities are available.
- The conference/meeting facilities are located on the ground floor.

Room Information

[Collapse -](#)

- The hotel has 96 rooms in total.
- There is an/are accessible room(s) within the hotel.
- The accessible room(s) is/are located on the ground floor.
- The hotel has 2 accessible room(s) with accessible ensuite facilities.
- There is/are 2 accessible room(s) with a bath.
- There is an/are adjoining room(s) available for the accessible room(s).

- The accessible rooms are 15m - 20m from the hotel entrance.
- There is a/are standard room(s) available on the ground floor.
- There is an/are adjoining room(s) available for the standard room(s).
- Rooms on other floors are accessed via stairs or lift.
- Bed raisers are not available on request.
- All televisions have subtitles available.

Comments

Collapse -

- Only room 009 has an adjoining room for a carer. The adjoining room is room 010.

Getting Here

Collapse -

By Road

Collapse -

- This hotel is located on the outskirts of Warrington, just off Junction 21 of the M6. The hotel is located on the B5210.
- The hotel has a car park which is free for all users.

By Bus

Collapse -

- There is not a bus stop within 150 metres of the hotel.
- The nearest bus stop is located on Manchester Road, approximately 350 metres from the hotel.
- [For more information on buses in Greater Manchester please click here \(opens new tab\) \(https://www.firstgroup.com/greater-manchester\).](https://www.firstgroup.com/greater-manchester)

By Train

Collapse -

- The nearest Railway Station is Warrington Central.
- Warrington Central station is situated in the centre of Warrington, located approximately 6.5km from the hotel. There are bus and taxi routes to the hotel from the station.
- [For more information on National Rail please click here \(opens new tab\) \(http://www.nationalrail.co.uk/stations_destinations/WAC.aspx\).](http://www.nationalrail.co.uk/stations_destinations/WAC.aspx)

Getting Help and Assistance

Collapse -

- There is a member of staff available for help and assistance.
- Staff receive disability awareness/equality training.
- Staff do not receive deaf awareness training.
- There is a member of staff trained in basic British Sign Language.
- There is an assistance dog toilet or toileting area at the venue/near by.
- The assistance dog toilet or toileting area is located in the car park.
- Water bowls for assistance dogs are available.
- There are mobility aids available.
- The mobility aids available include shower chairs.
- To obtain mobility aids please contact reception.

Parking

Collapse -

Parking

Collapse -

- The hotel does have its own parking facilities.
- The car park is located at the front of the hotel.
- The car park type is open air/surface.
- The car park does not have a height restriction barrier.
- The car park does not have a barrier control system.
- The car park surface is tarmac.
- There is a/are Blue Badge parking bay(s) available.
- The Blue Badge bay(s) markings are faded.
- There is/are 4 designated Blue Badge parking bay(s) within the car park.
- The dimensions of the designated Blue Badge parking bay(s) surveyed are 365cm x 600cm (11ft 12in x 19ft 8in).
- There is a 120cm hatched zone around the Blue Badge parking bay(s).
- The dimensions of other designated Blue Badge parking bay(s) vary in size.
- Parking spaces for Blue Badge holders do not need to be booked in advance.
- Clearly marked/signposted parent and child parking bays are not available.
- All parking spaces are provided on a first come first served basis.
- There is additional parking located at the rear of the hotel. There is an automatic barrier system when entering the car park. There is also a barrier when exiting the car park. This barrier is operated via a key code that can be obtained at reception. The keypad is 122cm in height. The keypad can be reached from the car.

Paying

Collapse -

- There are not parking charges for the car park.

Access from the Car Park

Collapse -

- The route from the car park to the entrance is accessible to a wheelchair user with assistance.
- Assistance may be required because there is/are slopes/ramps.
- The entrance is clearly visible from the car park.
- The surface on the approach to the entrance is concrete tiles and block paving.
- There is a road to cross between the car park and the entrance.
- There is no tactile paving on dropped kerbs between the car park and the entrance.
- The nearest designated Blue Badge parking bay is approximately 12m (13yd 4in) from the hotel entrance.

Drop-off Point(s)

Collapse -

- There is not a/are not clearly marked drop-off point(s).



1



2



3



4



5



6



7



8



9



10



11

Outside Access (Hotel Entrance)

Collapse -

Entrance

Collapse -

- This information is for the entrance located at the front of the building.
- The entrance area/door is clearly signed.
- There is step free access at this entrance.
- There is a canopy or recess which provides weather protection at this entrance.
- The entrance door(s) does/do contrast visually with its immediate surroundings.
- The bell/buzzer is in a suitable position to allow wheelchair users to gain access.
- The intercom is not in a suitable position to allow wheelchair users to gain access.
- The height of the intercom is 140cm (4ft 7in).
- The main door(s) open(s) automatically.
- The door(s) is/are double width.
- The width of the door opening is 120cm.
- There is a small lip on the threshold of the entrance, with a height of 2cm or below.
- There is a second set of doors.
- The door(s) open(s) automatically.
- The door(s) is/are single width.
- The width of the door opening is 101cm.
- There is a small lip on the threshold of the entrance, with a height of 2cm or below.

Comments

Collapse -

- The bell and intercom are located at the second set of doors.



1



2



3



4



5

Reception

Collapse -

Reception

Collapse -

- The reception point is located to the left as you enter.
- The reception point is approximately 2m (2yd 7in) from the hotel entrance.
- The reception area/desk is clearly visible from the entrance.
- There is step free access to the reception point.
- There is a clear unobstructed route to the reception point.
- There are no windows, TVs, glazed screens or mirrors behind the reception point which could adversely affect the ability of someone to lip read.
- The reception counter is not placed in front of a background which is patterned.
- The lighting levels at the reception point are good.
- The height of the reception counter is high (110cm+).
- There is sufficient space to write or sign documents on the counter.
- There is not a lowered section of the counter.
- The counter is staffed.
- There is a hearing assistance system at the reception point.
- The type of system is a portable loop.
- The hearing system is available only on request.
- The hearing assistance system is not signed.
- Staff are trained to use the system.
- Signs and universally accepted symbols or pictograms, indicating lifts, stairs, WCs, circulation routes and other parts of the building are provided in the reception area.
- The type of flooring in the reception area is carpet.

Reception Waiting Area

Collapse -

- There is a waiting area close to the reception point.
- Access to the waiting area is unobstructed.
- There are seats with armrests on both sides.
- There is sufficient space for a wheelchair user to use the waiting area.



1



2

Getting Around

Collapse -

Access

Collapse -

- There is step free access throughout the majority of the building.

Circulation

Collapse -

- There are not doors in corridors/walkways which have to be opened manually.
- The type of flooring in corridors/walkways is carpet.
- There is good colour contrast between the walls and floor in all areas.
- There is a mixture of seating with and without armrests at regular intervals.
- The lighting levels are good.
- Access to other floors/levels is via stairs and lift.

Signage

Collapse -

- Wayfinding signage is provided.
- The colour, design and typeface of signs is not consistent throughout the building.

Audio

Collapse -

- This venue does play background music in public areas.
- Music is played in the reception lobby, bar and restaurant areas.
- The system is a portable loop.
- The hearing assistance system is available only on request.



1



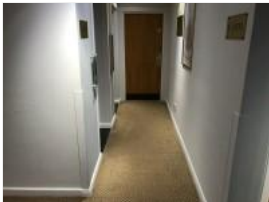
2



3



4



5



6

Level Change (Bar and Restaurant)

Collapse -

Ramp / Slope

Collapse -

- There is a ramp/slope located ahead as you enter.
- The ramp/slope is used to access the bar and restaurant.
- The gradient of the ramp/slope is steep.
- The ramp/slope is portable.
- There is a level landing at the top of the ramp/slope.
- There is a/are handrail(s) at the ramp.
- The handrail(s) is/are on the right going up.
- The width of the ramp/slope is 91cm (2ft 12in).
- The lighting levels at the ramp/slope are good.
- The ramp/slope does bypass the step(s).

Step(s)

Collapse -

- There is a/are step(s) located ahead as you enter.
- The step(s) is/are used to access the bar and restaurant.
- There is/are 2 step(s).
- The step(s) is/are clearly marked.
- The height of the step(s) is/are not between 15cm and 18cm.
- The height of the step(s) is/are 14cm.
- The going of the step(s) is/are not between the recommended 30cm and 45cm.
- There is a/are handrail(s) at the step(s).
- The handrail(s) is/are on the left going up.
- Handrails are not at the recommended height (90cm-100cm).

- Handrails do cover the flight of stairs throughout its length.
- Handrails are easy to grip.
- Handrails do not extend horizontally beyond the first and last steps.
- The lighting levels at the step(s) are good.



1



2



3



4

Eating and Drinking (Bar)

Collapse -

- The following information is for the bar.
- The bar is located on the ground floor, ahead as you enter.
- There is ramped/sloped and stepped access to the bar.
- Full table service is not available.
- Food and/or drinks are ordered from the service counter.
- Food and/or drinks can be brought to the table.
- The height of the service counter is high (110cm+).
- There is not a lowered section of the counter.
- There is a hearing assistance system.
- The system is a portable loop.
- The hearing assistance system is not signed.
- Staff are trained to use the system.
- There is step-free access within the bar.
- There is ample room for a wheelchair user to manoeuvre.
- This area does play background music.
- The type of flooring in this area is carpet.
- No tables are permanently fixed.
- No chairs are permanently fixed.
- Some chairs have armrests on both sides.
- The nearest table is approximately 1m from the till/counter.
- The distance between the floor and the lowest table is 50cm.
- The distance between the floor and the highest table is 65cm.
- Plastic/takeaway cups are available.
- Plastic/takeaway cutlery is not available.
- Drinking straws are available.
- Children are welcomed in the bar area.
- There are hand held menus and wall menus available.
- Menus are not available in Braille.
- Menus are not available in large print.
- Picture menus are available.
- Menus are clearly written.
- Menus are presented in contrasting colours.
- The type of food served here is hot and cold meals and snacks.
- The lighting levels are good.



1



2



3



4



5

Eating and Drinking (Restaurant)

Collapse -

- The following information is for the restaurant.
- The restaurant is located ahead as you enter, to the rear of the bar.
- There is ramped/sloped access to the restaurant.
- Full table service is available.
- There is a hearing assistance system.
- The system is a portable loop.
- The hearing assistance system is not signed.
- Staff are trained to use the system.
- There is step free access within the restaurant.
- There is ample room for a wheelchair user to manoeuvre.
- This area does play background music.
- The type of flooring in this area is carpet.
- No tables are permanently fixed.
- No chairs are permanently fixed.
- Some chairs have armrests on both sides.
- The distance between the floor and the lowest table is 50cm.
- The distance between the floor and the highest table is 70cm.
- Plastic/takeaway cups are available.
- Plastic/takeaway cutlery is not available.
- Drinking straws are available.
- There are hand held menus available.
- Menus are not available in Braille.
- Menus are not available in large print.
- Picture menus are not available.
- Menus are clearly written.
- Menus are presented in contrasting colours.
- The type of food served here is hot and cold meals and snacks.
- The lighting levels are good.



1



2



3



4



5



6



7



8



9



10

Conference / Meeting Facilities (Chesford Room)

Collapse -

- Conference/meeting facilities are available.
- The conference/meeting facilities are located on the ground floor, off the bar area.
- There is stepped access to the conference/meeting facilities.
- The door opening width(s) is/are 75cm+ for the room(s).
- There is a hearing assistance system for the room(s) available on request.
- There is a/are chair(s) with armrests on both sides within the room(s).
- There is sufficient space for a wheelchair user to manoeuvre within the room(s).
- The lighting levels in the room(s) are good.



1



2



3



4



5



6

Step(s) (Conference / Meeting Facilities - Chesford Room)

Collapse -

- There is a/are step(s) located in front of the Chesford Room entrance.
- The step(s) is/are used to access the Chesford Room.
- There is/are 2 step(s).
- The step(s) is/are clearly marked.
- The height of the step(s) is/are between 15cm and 18cm.
- The going of the step(s) is/are not between 30cm and 45cm.
- There is not a/are not handrail(s) at the step(s).
- The lighting levels at the step(s) are good.



1

Conference / Meeting Facilities (The Grange Room)

Collapse -

- Conference/meeting facilities are available.
- The conference/meeting facilities are located on the ground floor, off the corridor to the left as you enter.
- There is step free access to the conference/meeting facilities.
- The door opening width(s) is/are 75cm+ for the room(s).
- There is a hearing assistance system for the room(s).
- There is a/a chair(s) with armrests on both sides within the room(s).
- There is not sufficient space for a wheelchair user to manoeuvre within the room(s).
- The lighting levels in the room(s) are good.



1



2



3



4

Conference / Meeting Facilities (Kingsland Room)

Collapse -

- Conference/meeting facilities are available.
- The conference/meeting facilities are located on the ground floor, off the corridor to the left as you enter.
- There is step free access to the conference/meeting facilities.
- The door opening width(s) is/are 75cm+ for the room(s).
- There is a hearing assistance system for the room(s) available on request.
- There is a/a chair(s) with armrests on both sides within the room(s).
- There is not sufficient space for a wheelchair user to manoeuvre within the room(s).
- The lighting levels in the room(s) are good.



1



2



3



4

Accessible Room(s) (Rooms 007 and 009)

Collapse -

Accessible Room Information

Collapse -

- The details in this section relates to the accessible room(s) with a lowered bath.
- This type of accessible room is located on the ground floor, off the corridor to the right as you enter.
- There is step free access to this type of accessible room.
- All accessible rooms of this type have similar specifications.

- The ensuite transfer space for the accessible rooms varies from left to right.
- Guests do not need to open a door between the entrance and the room(s).
- The narrowest width of the corridor leading to the room surveyed was 133cm.

Bedroom Features

Collapse -

- The accessible room surveyed is located on the ground floor, off the corridor to the right as you enter.
- The accessible room surveyed at the time of the visit was Room 007.
- There is step free access to the accessible room surveyed.
- There is numbered signage on or near the accessible room door.
- The door is manual with a key card lock.
- The fob/card reader height is 110cm.
- The width of the door is 84cm (2ft 9in).
- There are lowered spy holes available.
- The bed type is double.
- The bed height is not adjustable.
- The height of the bed is 59cm (1ft 11in).
- The measurement between the bed base and floor is 12cm (5in).
- The bed is moveable.
- The room does have an unobstructed minimum turning space of 150cm x 150cm next to the bed.
- The height of the desk is 72cm.
- The desk is not height adjustable.
- The desk knee recess does not have the recommended dimensions of 70cm (height) x 50cm (depth).
- The height and depth of the knee recess is 72cm x 46cm.
- The room surveyed had a desk chair with armrests and an armchair.
- Wardrobes have been adapted to allow use from a seated position.
- Light switches are between 75cm and 120cm (4ft) from floor level.
- Electric sockets are between 40cm and 100cm (4ft) from floor level.
- The window control type(s) for the room is a/are standard lever(s).
- There is an emergency alarm in the room.
- The emergency pull cord alarm is within reach and fully functional.
- The emergency alarm rings to reception.
- There is a flashing fire alarm beacon within the room.
- The type of flooring is carpet.

Ensuite Facilities

Collapse -

- The ensuite door opens outwards.
- The door weight is light.
- The door is locked by a twist lock.
- The width of the door to the ensuite is 86cm (2ft 10in).
- The dimensions of the ensuite are 215cm x 240cm (7ft 1in x 7ft 10in).
- The ensuite does have an unobstructed minimum turning space of 150cm x 150cm in front of the toilet seat.
- The ensuite has not got a non slip floor.
- There is an emergency alarm within the ensuite.
- The emergency pull cord alarm is within reach and fully functional.
- The emergency alarm rings to reception.
- There is a flashing fire alarm beacon within the ensuite.
- Disposal facilities are available.
- There is a/are general domestic waste disposal units.
- There is a mirror.
- The mirror is not placed at a lower level or at an angle for ease of use.
- There is a shelf immediately next to or behind the toilet.
- The shelf is between 90cm and 100cm.

- There is a wash basin.
- The wash basin cannot be reached from seated on the toilet.
- The wash basin is not placed higher than 74cm (2ft 5in).
- The height of the wash basin is 69cm.
- There are vertical wall-mounted grab rails on both sides of the wash basin.
- The tap type is lever.
- There is a mixer tap.
- There is not a soap dispenser.

Toilet Details

Collapse -

- The height of the toilet seat above floor level is 51cm (1ft 8in).
- The toilet has a covered cistern.
- There is a lateral transfer space.
- As you face the toilet pan the transfer space is on the right.
- The lateral transfer space is 105cm (3ft 5in).
- There is a flush, however it is not on the transfer side.
- There is not a spatula type lever flush.
- There is a dropdown rail on the transfer side.
- There is a/are wall-mounted grab rail(s) available.
- As you face the toilet, the wall mounted grab rails are on the left.
- There is not a vertical wall-mounted grab rail on the transfer side.
- There is a horizontal wall-mounted grab rail on the opposite side of the seat to the transfer space.
- There is a toilet roll holder.
- The toilet roll holder can be reached from seated on the toilet.
- The toilet roll holder is not placed higher than 100cm (3ft 3in).

Bath Details

Collapse -

- The ensuite has a lowered bath.
- The height of the side of the bath from floor level is 49cm (1ft 7in).
- The tap type is lever.
- There is a mixer tap.
- There is a shower over the bath.
- The shower head is height adjustable.
- The shower control type is lever.
- There is a/are wall-mounted grab rail(s) available for the bath.

Colour Contrast and Lighting

Collapse -

- The colour contrast between the external hotel room door and wall is good.
- The colour contrast between the internal hotel room door and wall is good.
- The colour contrast between the hotel room walls and floor is good.
- The colour contrast between the external ensuite door and wall is poor.
- The colour contrast between the internal ensuite door and wall is good.
- The colour contrast between the ensuite walls and floor is fair.
- The colour contrast between the drop down rail(s) and wall is good.
- The colour contrast between the wall-mounted grab rail(s) and wall is good.
- The toilet seat colour contrast is poor.
- The lighting levels in the room are good.
- The lighting levels in the ensuite are low.



1



2



3



4



5



6



7



8



9



10



11



12

Other Floors

Collapse -

Stairs

Collapse -

- Stairs can be used to access other floors.
- The stairs are for public use.
- The stairs are located off the corridor to the right as you enter.
- The stairs are approximately 20m from the hotel entrance.
- Signs indicating the location of the stairs are not available from the entrance.
- There are manual, heavy, single doors to enter and exit the stairwell on all floors.
- The floors which are accessible by stairs are G, 1, 2 and 3.
- There are 15+ steps between floors.
- The height of the step(s) is/are between the recommended 15cm and 18cm.
- The going of the step(s) is/are not between the recommended 30cm and 45cm.
- The steps are clearly marked.
- There is a/are handrail(s) at the step(s).
- The steps have a handrail on both sides.
- Handrails are at the recommended height (90cm-100cm).
- Handrails do cover the flight of stairs throughout its length.
- Handrails are not easy to grip.
- Handrails do not extend horizontally beyond the first and last steps.
- There is a landing.
- Clear signs indicating the facilities on each floor are not provided on landings.
- The lighting levels at the steps are varied.



1



2



3

Lift

Collapse -

- There is a lift for public use.
- The lift is located to the right as you enter.
- The lift is clearly visible from the entrance.
- The lift is approximately 4m (4yd 1ft) from the hotel entrance.
- The lift is a standard lift.
- A member of staff does not need to be notified for use of the lift.
- The floors which are accessible by this lift are G, 1, 2 and 3.
- Clear signs indicating the facilities on each floor are provided on lift lobby landings.
- There is a clear level manoeuvring space of 150cm x 150cm in front of the lift.
- Lift doors do contrast visually with lift lobby walls.
- The external controls for the lift are within 90cm - 110cm from the floor.
- The colour contrast between the external lift controls and the control plate is good.
- The colour contrast between the external lift control plate and the wall is good.
- The clear door width is 80cm (2ft 7in).
- The dimensions of the lift are 106cm x 147cm (3ft 6in x 4ft 10in).
- There are no separate entry and exit doors in the lift.
- There is a mirror to aid reversing out of the lift.
- There is not a list of floor services available within the lift.
- The lift does have a visual floor indicator.
- The lift does not have an audible announcer.
- The controls for the lift are within 90cm - 120cm from the floor.
- There is a hearing loop system.
- The lift does have Braille markings.
- The lift does have tactile markings.
- The lighting levels in the lift are good.
- There is a/a similar lift(s) available.



1



2



3

Standard Room(s) (Room 128)

Collapse -

Bedroom Features

Collapse -

- The room surveyed is located on the first floor, to the left as you exit the lift.
- The room surveyed at the time of the visit was Room 128.
- There is step free access to the room surveyed, via lift.
- There is numbered signage on or near the room door.
- The width of the door is 84cm (2ft 9in).
- The bed type is double.
- The height of the bed is 59cm (1ft 11in).
- The measurement between the bed base and floor is 13cm (5in).
- Light switches are not within 120cm (3ft 11in) from floor level.
- There is not an emergency alarm in the room.
- There is not a flashing fire alarm beacon within the room.
- The type of facilities within the ensuite include; a toilet, a wash basin, a bath and a shower.
- The ensuite door opens inwards.

- The width of the door to the ensuite is 84cm (2ft 9in).
- There is not an emergency alarm within the ensuite.
- There is not a flashing fire alarm beacon within the ensuite.
- The tap type is lever.
- There is a mixer tap.
- Wall-mounted grab rails are available for the bath.

Colour Contrast and Lighting

Collapse -

- The colour contrast between the external hotel room door and wall is good.
- The colour contrast between the internal hotel room door and wall is good.
- The colour contrast between the hotel room walls and floor is good.
- The colour contrast between the external ensuite door and wall is good.
- The colour contrast between the internal ensuite door and wall is good.
- The colour contrast between the walls and floor in the ensuite is fair.
- The colour contrast between the grab rails and wall is good.
- The lighting levels in the room are good.
- The lighting levels in the ensuite are good.



1



2



3



4



5



6



7



8



9



10

Standard Room(s) (Executive Room 102)

Collapse -

Bedroom Features

Collapse -

- The room surveyed is located on the first floor, to the right as you exit the lift.
- The room surveyed at the time of the visit was Room 102.
- There is step free access to the room surveyed, via lift.
- There is numbered signage on or near the room door.
- The width of the door is 85cm (2ft 9in).
- The bed type is double.
- The height of the bed is 60cm (1ft 12in).
- The measurement between the bed base and floor is 13cm (5in).

- Light switches are not within 120cm (3ft 11in) from floor level.
- There is not an emergency alarm in the room.
- There is not a flashing fire alarm beacon within the room.
- The type of facilities within the ensuite include; a toilet, a wash basin and a shower.
- The ensuite door opens inwards.
- The width of the door to the ensuite is 74cm (2ft 5in).
- There is not an emergency alarm within the ensuite.
- There is not a flashing fire alarm beacon within the ensuite.
- The tap type is lever.
- There is a mixer tap.

Colour Contrast and Lighting

Collapse -

- The colour contrast between the external hotel room door and wall is good.
- The colour contrast between the internal hotel room door and wall is good.
- The colour contrast between the hotel room walls and floor is good.
- The colour contrast between the external ensuite door and wall is good.
- The colour contrast between the internal ensuite door and wall is good.
- The colour contrast between the walls and floor in the ensuite is good.
- The lighting levels in the room are good.
- The lighting levels in the ensuite are good.



1



2



3



4



5



6



7



8



9



10

Accessible Toilet(s) (Ground Floor)

Collapse -

- There is an/are accessible toilet(s) for public use.

Location and Access

Collapse -

- The accessible toilet surveyed is not for the sole use of disabled people.
- This accessible toilet is located on the ground floor, off the corridor to the right as you enter.
- This accessible toilet is approximately 12m (13yd 4in) from the hotel entrance.
- There is step free access to the accessible toilet.